

Prof. Ayla SAN, M.D., President of Anatolia Kidney Foundation and Ufuk University, Department of Nephrology
Assoc. Prof. İhsan ERGUN, M.D., Ufuk University, Department of Nephrology
Spec. Bahar GÜRLEK DEMİRCİ, M.D. Ufuk University, Department of Nephrology Assistant
The statistical analysis was prepared by Aşlıhan YILMAZ, M.D.

Protect your kidneys, Save your heart

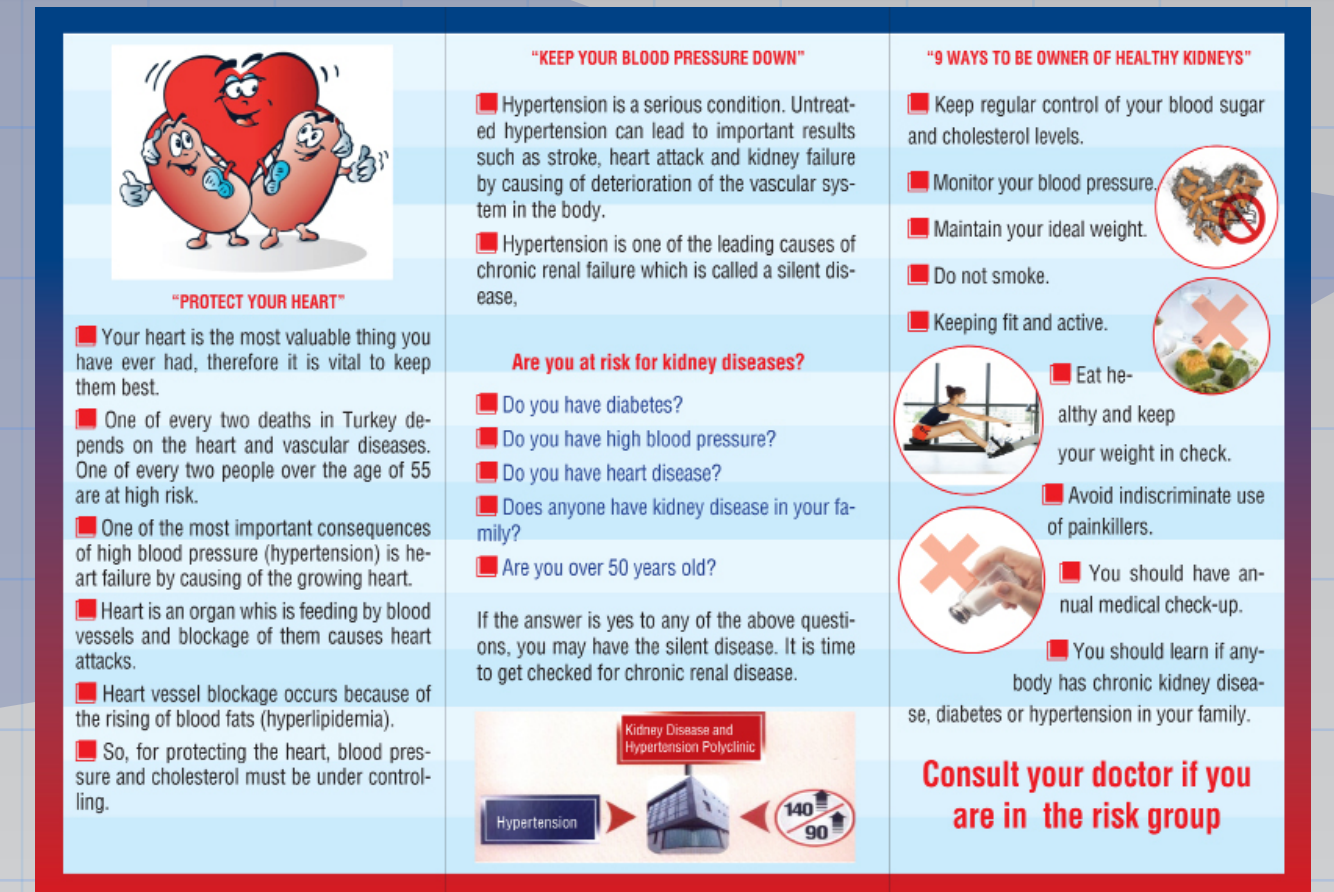
Our Social Activities



Brochures 2011



Our Activities in CEPA Mall



Brochures 2011



Our Activities in CEPA Mall Kent park



The World Kidney Day was talked about in the program “This is Life” on Channel A at 4.40 p.m. on 10th March 2011. Prof Ayla San, M.D. was interviewed and asked questions.

Ufuk University Medical School Students worked at stands, checking people's blood pressure and blood level at CEPA and KENTPARK Malls from 10.00 a.m. to 10 p.m. The students were very ambitious. Thus, they were successful in carrying out the activities. Our people showed intense interest to these stands.

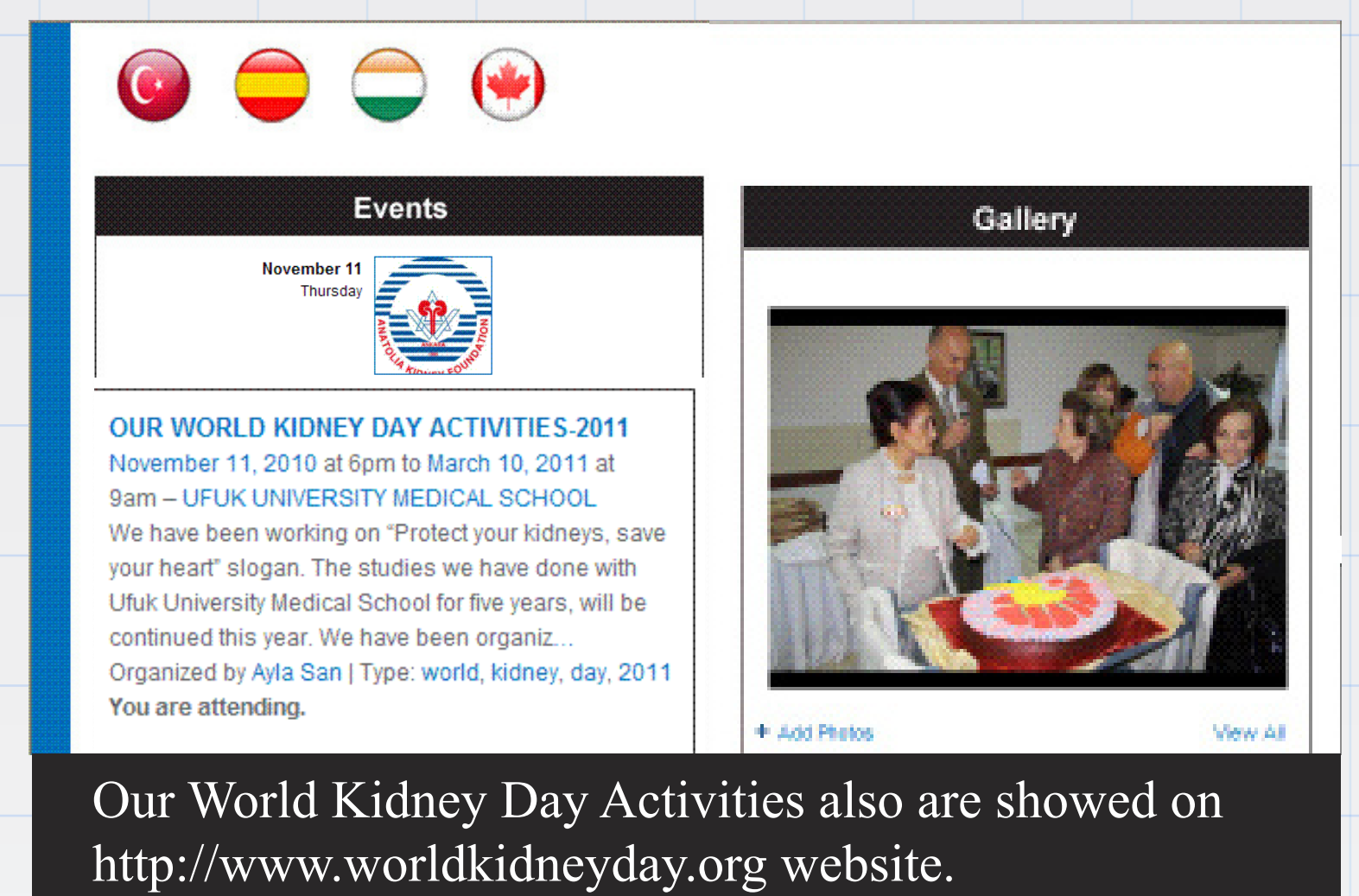
- ✓ 200 people attended our activities at CEPA and KENTPARK Malls.
- ✓ 73 Female (36,5 %) and 127 Male (63,5 %)
- ✓ Average Age: 38,5 ±13,7
- ✓ Average Blood Sugar Level: 119 ±35 mg/dl.
- ✓ The number of patients Blood sugar > 200 mg / dL: 8/200= 4%
- ✓ Average Systolic blood pressure: 125 ±16 mm Hg (76-188)
- ✓ The number of patients with systolic blood pressure > 140 mm Hg: 27/200= 13,5 %
- ✓ Average Diastolic blood pressure: 80 ±13 mmHg



WORLD KIDNEY DAY



Protect your kidneys, Save your heart



Our World Kidney Day Activities also are showed on <http://www.worldkidneyday.org> website.

12.30 am - 1.30 pm “25th Universiade Winter Games Photograph Exhibition (In cooperation with Photographic Arts Federation of Turkey) and Cocktail. Sami TÜRKAY Fikret ÖZKAPLAN Ayla SAN



From 11.00 a.m. to 12.30 p.m. the ‘25th Universiade Winter Games Photograph Exhibition’ was displayed in cooperation with the Photographic Arts Federation of Turkey. Many people gave positive and motivating comments on the photographs displayed.

